

INSTALLATION INSTRUCTIONS: TCA-712SE LED DRL Bar 2012 Toyota Camry



Remove battery from vehicle

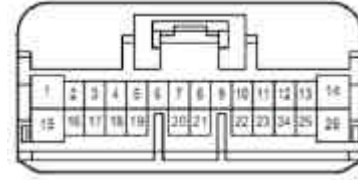
Installation

1. From front of vehicle, run the DRL's wire harness on the driver side from the battery towards the firewall of the car. Use wire ties as needed
2. Locate the large vehicle harness grommet on the left side. If accessible, cut the auxiliary wiring access nipple off the grommet or cut ¼" slit in grommet and push the red, black, black-white and red-white wires through firewall. Note: Extra caution should be taken not to damage the bullet connectors. Seal with silicone sealant
3. From inside the cabin, remove dash panels and locate the connector that was pushed through the firewall on step 2.
4. Route the wire harness to reach the lower part of the steering wheel
5. Push the pins into the connector supplied in kit. Make sure that the wire colors of the connectors are aligned with the wire colors of the driver box: black with black and red with red, etc (picture 1)

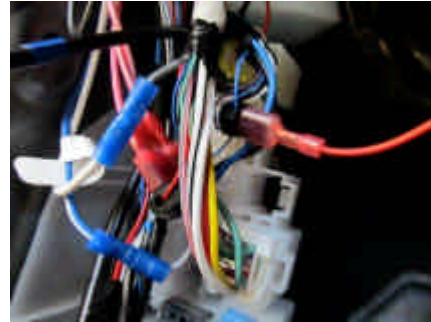


Picture 1

6. Connect the driver box to the wires pushed into the connectors on step 5 (make sure wire colors are aligned).
7. T-tap the red wire from DRL harness to connector K12 pin 19, blue wire. Connector K12 is located in the driver side kick panel (pictures 2 and 3)

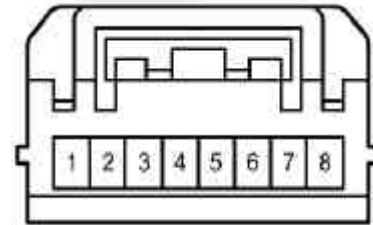


Picture 2: Connector K12

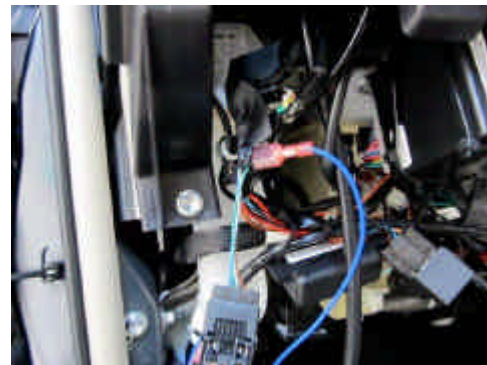


Picture 3

8. T-tap the blue wire from DRL harness to connector I130 pin 5, green wire. Connector I130 is located at the back of the traction control switch (pictures 4 and 5)



Picture 4

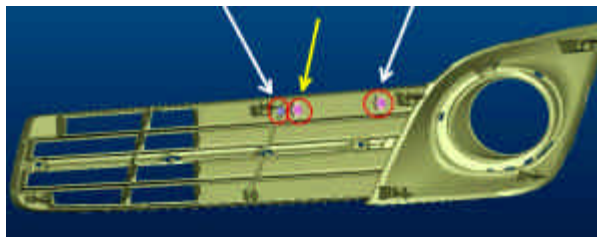


Picture 5

9. Secure ground (black) wire to bolt in kick panel
10. Secure any excess wire and relay with wire ties
11. Install and connect switch on dash panel
12. Reinstall dash panels and connectors.

INSTALLATION INSTRUCTIONS: TCA-712SE LED DRL Bar 2012 Toyota Camry

13. In the engine compartment, route the DRL's wire under car.
14. Remove fog light bezels by removing 2 Phillips screws and releasing the tabs
15. Place the left face up on a drilling bench
16. Use the supplied jigs to drill three 10 mm holes on the bezel as described on picture 6~6B).



Picture 6



Picture 6A



Picture 6B

17. Using the supplied screws and angled washers, mount the LED DRL on the bezels (picture 7)



Picture 7

18. Reinstall bezels in vehicle
19. Plug in left side DRL into harness plug and secure with wire ties
20. Run right side of wire harness under skid plate and secure with wire ties
21. Plug in right DRL into harness plug and secure with wire ties
22. Reattach the lower splash shields
23. Reinstall battery. Avoid compressing relay against battery

DONMAR
SUNROOFS & ACCESSORIES

<http://www.donmar.com>