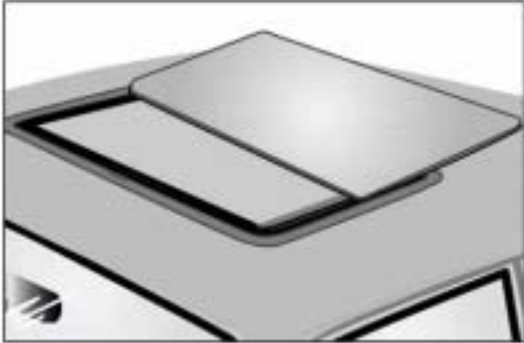


2. Removing the Hollandia 300 Large



01

Open the roof at about 1 cm (3/8 inch) before full open position.



02



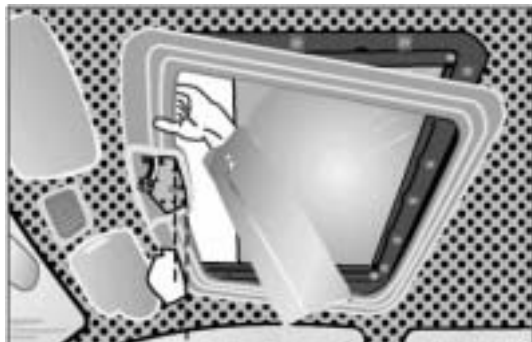
Remove the crank and the locking plate.



03



Remove the trim shell.

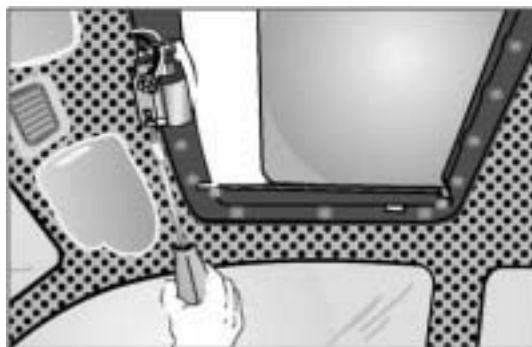


04



Hollandia 300 Large electric hard trim:

Remove the switch and the trim shell.



05



Hollandia 300 Large electric hard trim:

Dismount the motor by removing the two screws.



06



Hollandia 300 Large electric soft trim:

Remove the sunshade completely. To do so remove one guide by lifting the guide spring.

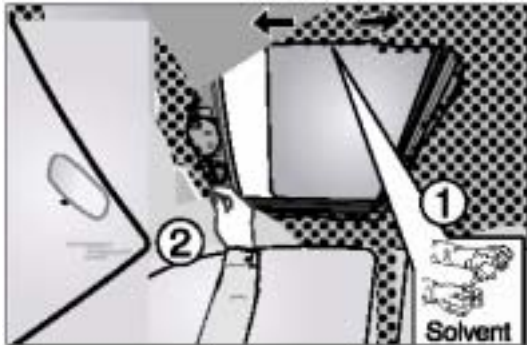


07



Hollandia 300 Large soft trim:

Remove the edge finisher.

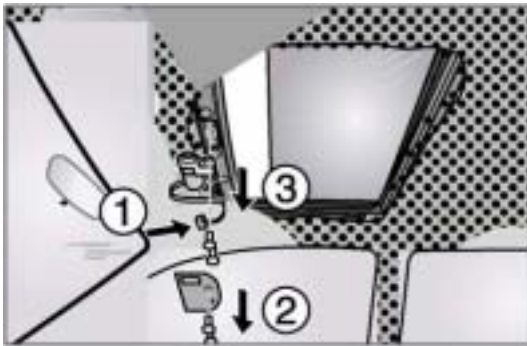


07



Hollandia 300 Large soft trim:

The soft headliner is glued all around the aperture. Apply solvent to dissolve the glue.

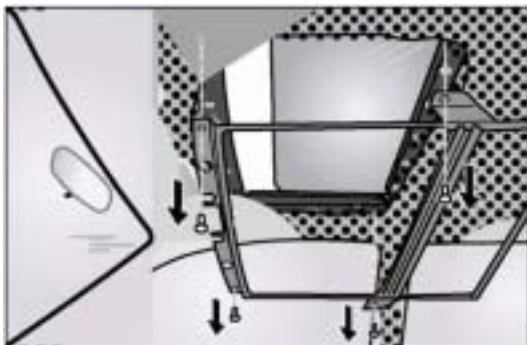


08



Hollandia 300 Large soft trim:

Disconnect the electrical connector from the motor. Remove the motor cover and the motor.



09



Hollandia 300 Large soft trim:

Remove the soft trim.



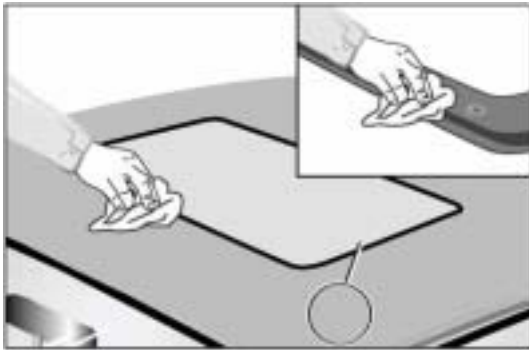
10

Remove the retainer ring.



11

Remove the sunroof.



12

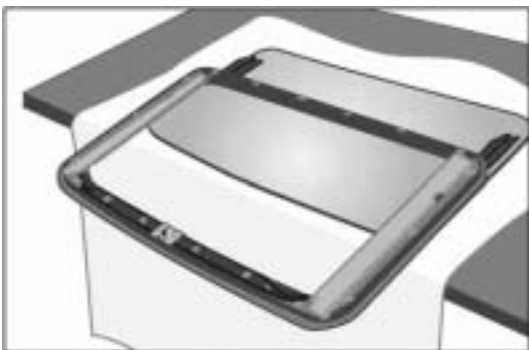
Remove the remains of sealing mastic from roof skin and frame.



13

Unhook the sliding blocks along the front of the wind deflector.

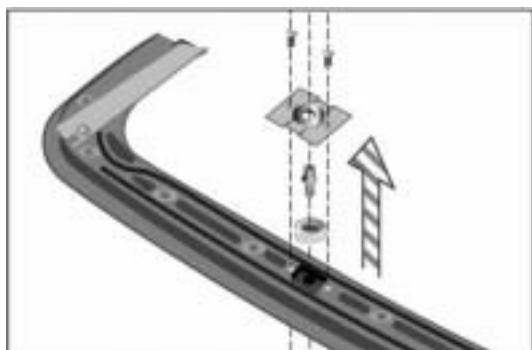
Pull the mounting blocks out of the guides.



14

Place sunroof on a work-bench with a non-scratching surface.

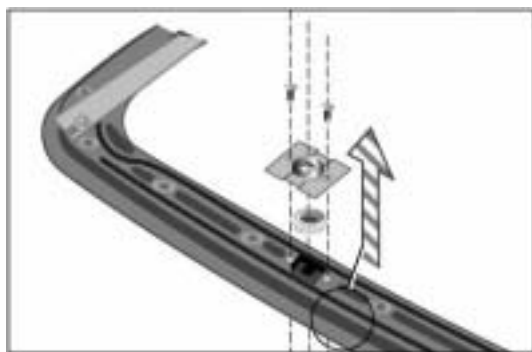
Place the sunroof on the work-bench with the front facing you.



15



Remove the drive box, the drive shaft and the gear wheel.



16

Remove the drive box and the gear wheel.



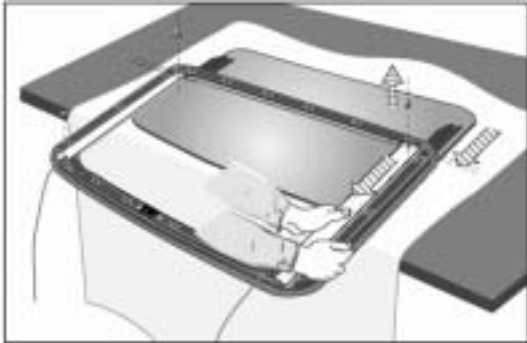
17

Take the drive cables out of the frame and remove the guide tubes.



18

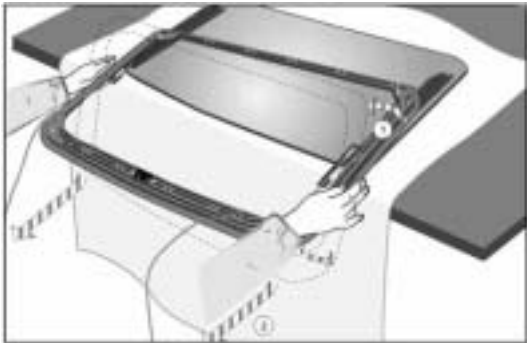
Mark the position of the guides in respect to the frame.



19

Remove the four red screws.

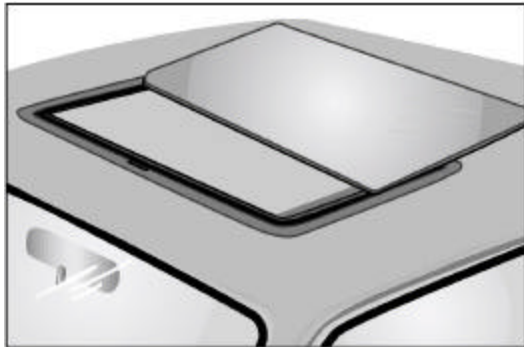
Slide the guides about 1 cm (3/8 inch) forward. The frame must be supported during this operation.



20

Rotate the frame with the front side down and remove the frame by sliding it forwards.

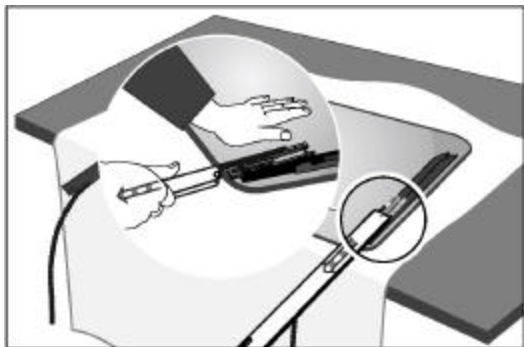
7. Replacing locker slide, mechanism and/or glass panel



01

Dismount the roof as described in step 1 through 16 of chapter 2 "Removing and dismounting Stratos 300 large".

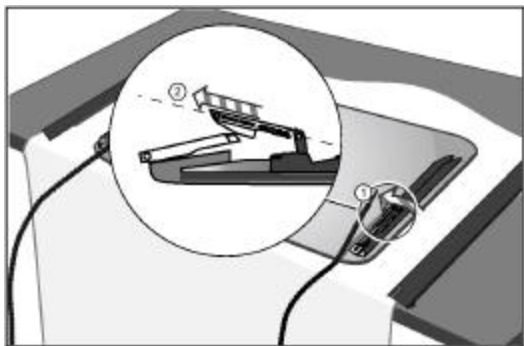
Hereafter continue with the following steps.



02

Remove the guides by sliding them forward.

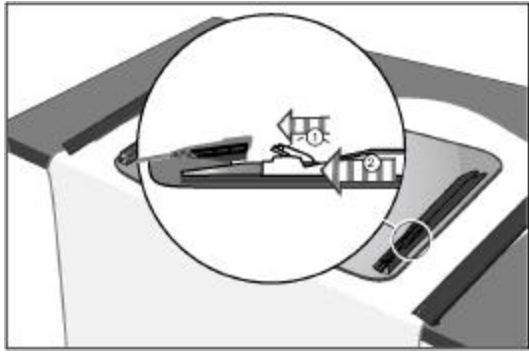
Note: do not bend the guides downward.



03

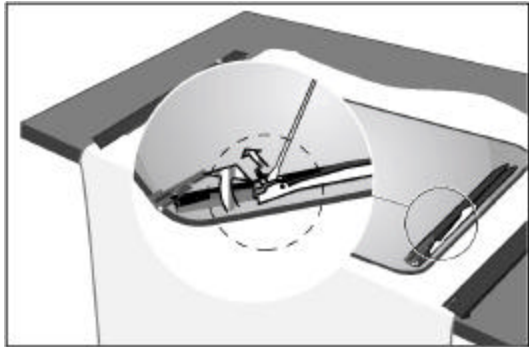
Remove the drive cables.

Remove the driving slides.



04

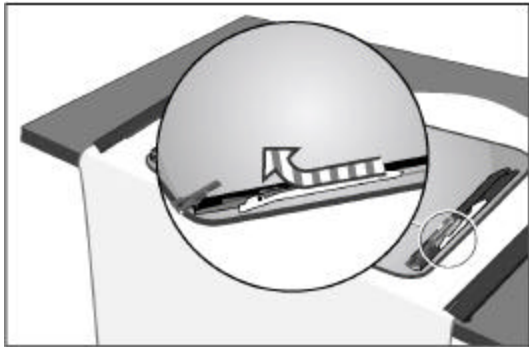
Rotate the lever forward and slide it together with the locker slide forward.



05

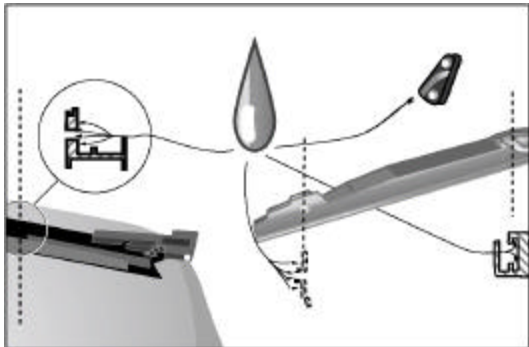
Force the lever carefully to the inside by inserting a screwdriver in between the mounting profile and the levers.

Remove the lever.



06

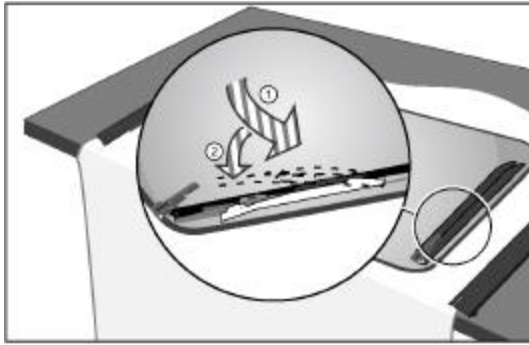
Push the front end of the locker slide to the outside and slide it forward.



07

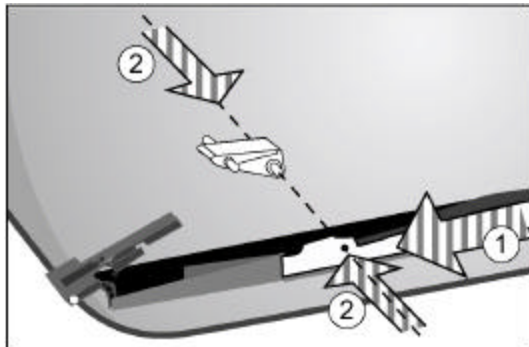
Apply lubricant to the following parts:

- the guide.
- the curve of the driving slide.
- the lever.
- the locker slide.
- the mounting profiles (bonded under glass panel).



08

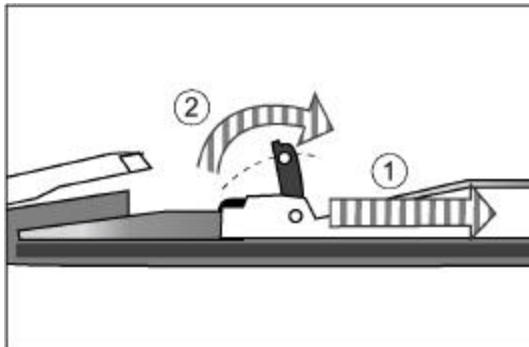
Place the locker slide, with the front to the outside, over the mounting profiles and slide it rearward.



09

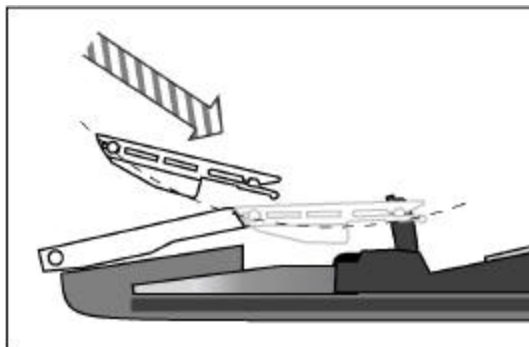
Slide the locker slide forward.

Push the pin of the lever carefully (through the mounting profiles) in the locker slide.



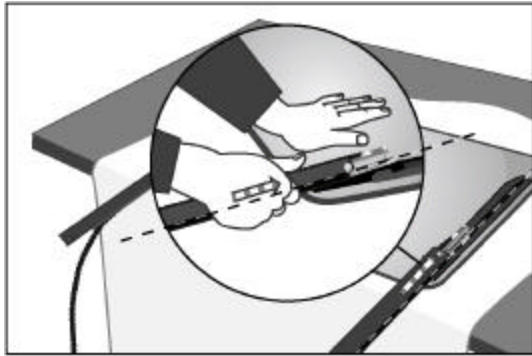
10

Slide the lever together with the locker slide rearward, and rotate the lever rearward.



11

Mount the driving slide to the lever and the front tumbler.

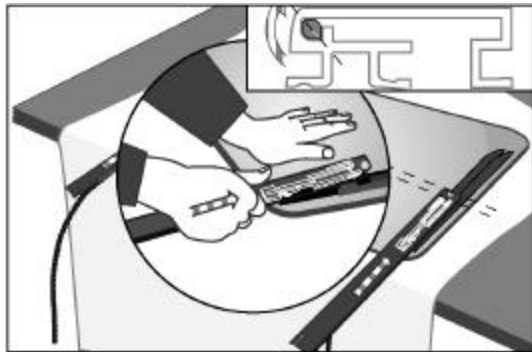


12

Position the front tumbler and the driving slide in-line with each other.

Slide the guide carefully over the front tumbler and driving slide until the driving slide extends 4,5 cm (2 inches) out of the guide.

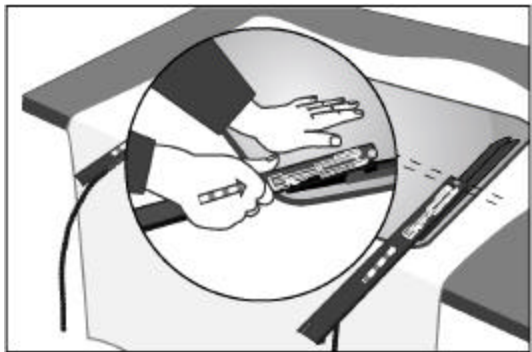
Note: To avoid damaging, do not force Guides.



13

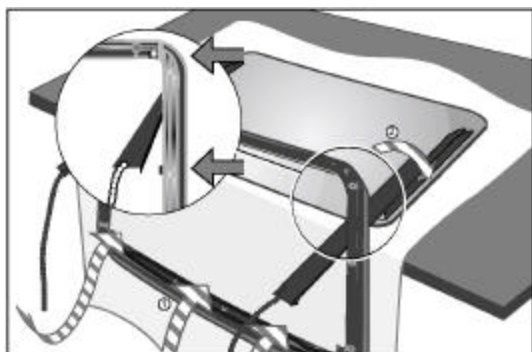
Mount the drive cable on the driving slide.

Rotate the drive cable, so that the points of the oval cable end fit into the guides.



14

Slide the guide rearwards until the end of the driving slide is 1 cm (3/8 inch) within the guide.



15

Mount the roof as described in step 1 through 24 of chapter 3 "Mounting and replacing Stratos 300 Large".