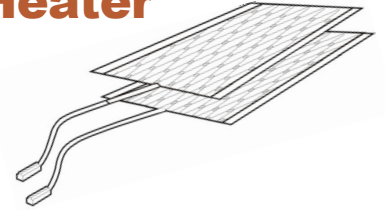


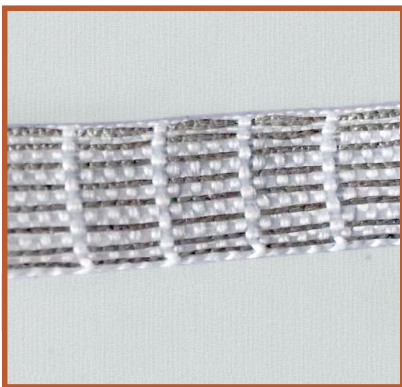
SH-R-04 Carbon Fiber Grid Seat Heater Parallel Wire Conductor Bus



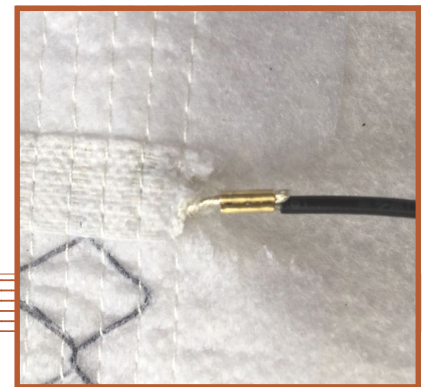
NEW for 2016

All NEW **Parallel Wire Bus** is more flexible, more durable and longer lasting than conventional foil strip conductor bus lines used in most other carbon fiber grid seat heaters.

- ◆ Parallel wires create 8 independent conductive paths with multiple contact points for better conductivity across the carbon fiber grid heating element. If one wire is damaged, independent conductive paths remain, whereas, if a foil strip is damaged, the crack continues to grow until it fails completely.
- ◆ Stranded wire is more flexible and much stronger than any solid core wire or thin foil strip.
- ◆ 100% copper strands are silver plated for maximum conductivity and corrosion resistance.
- ◆ Better conductivity means lower resistance and lower power draw (Amps) for the same heat output.
- ◆ Bus wires are embedded into a fire resistant polypropylene strip, which is bonded onto the overlapping carbon fiber grid and sewn into the heater substrate pad, doubling insulating the bus.
- ◆ All 8 wires are twisted together at the end, crimped onto the copper lead wires, then insulated with heat shrink tubing, creating a clean, flexible, low resistance connection, unlike conventional systems which simply solder the lead wire on top of a foil strip.



Parallel Bus Wires



Crimped onto Lead Wire



Part of our Modular
Seat Heater System



CF Grid



Split Pad



Bolster Pad

distributed by
DONMAR
SUNROOFS & ACCESSORIES
www.donmar.com